



Rhonda R. Novak, CIAO/I
Supervisor of Assessments



**WILL COUNTY SUPERVISOR
OF ASSESSMENTS OFFICE**

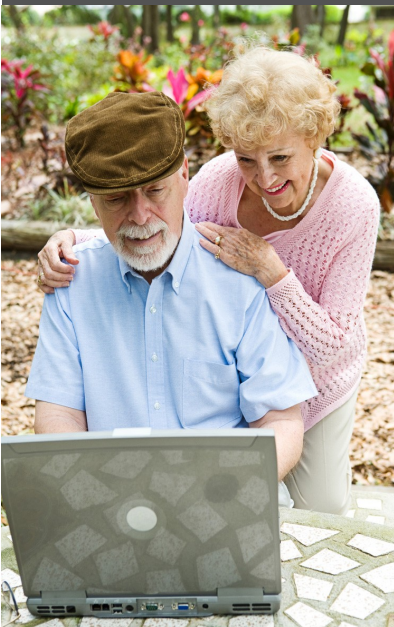
**RHONDA R. NOVAK, CIAO/I
CHIEF COUNTY
ASSESSMENT OFFICER**

**302 N CHICAGO ST
2ND FLOOR
JOLIET, IL 60432**

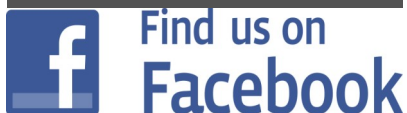
**PHONE: (815) 740-4648
FAX: (815) 740-4696
WWW.WILLCOUNTYSOA.COM**

HOURS:

**MONDAY - FRIDAY
8:30 AM - 4:30 PM**



For a complete listing of senior assistance events, visit our Web site and click on "Events."



SENIOR CITIZEN ASSESSMENT FREEZE HOMESTEAD EXEMPTION

This money-saving exemption allows senior citizens who have a total household income of less than \$55,000 and meet certain other qualifications to elect to maintain the equalized assessed value (EAV) of their homes at the base year EAV and prevent any increase in that value due to inflation.

All of that means that as long as you qualify, your assessment will not go up even if the value of your home increases. And this could possibly mean a savings of hundreds or even thousands of dollars on your tax bill. (Please note, however, that the tax rate is not frozen.)

Qualified individuals must complete and file Form PTAX-340 (Senior Citizens Assessment Freeze Homestead Exemption Application and Affidavit) each year with the Supervisor of Assessments.

AM I ELIGIBLE?

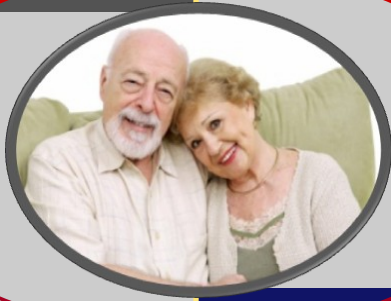
The Senior Citizens Assessment Freeze Homestead Exemption qualifications for the 2011 tax year (for the property taxes you will pay in 2012), are listed below:

- You will be 65 or older during 2011.
- Your total household income in 2010 was \$55,000 or less.
- On January 1st 2010 and January 1st 2011 you:
 1. used the property as your principal place of residence,
 2. owned the property, or had a legal or equitable interest in the property by a written instrument, or had a leasehold interest in the property used as a single family residence and
 3. were liable for the payment of property taxes.

You do not qualify for this exemption if your property is assessed under the mobile home privilege tax.

****THIS IS NOT A DEFERRAL PROGRAM. THERE IS NO PENALTY.****

HOW DO I APPLY?



All renewal applications will be mailed out in April 1, 2011.

The deadline to turn in your application is July 1, 2011

If you have not received an application in the mail, you can obtain one by contacting Gail Kaiser at (815) 740-4718 or by stopping by our office.

Applying for the **Senior Citizen Assessment Freeze Homestead Exemption** is easy. Simply fill out the application and provide the following information:

- A copy of the front page of your **2010** IRS 1040 & your **2010** Social Security 1099
- If you did not file a **2010** IRS 1040, submit a copy of the **2010** Social Security 1099 and ALL other household income verification for **2010**

If you need assistance with your application, you can call us, stop by our office or drop by one of our many senior assistance events, and one of our senior specialists will be happy to help.

****YOU MUST RE-APPLY FOR THIS EXEMPTION EVERY YEAR.****

Copies of IRS income tax documents and application for Senior Citizens Assessment Freeze Homestead Exemption, are maintained by the Chief County Assessment Officer and are not for public inspection.

Senior Assistance Events

Each year, the Will County Supervisor of Assessments Office hosts numerous senior education events across the county. Seniors and their families are encouraged to come out and learn about how they can sign up for money-saving exemptions. Staff is on hand at all events to answer questions and help with exemption applications.

Senior assistance events are offered as a part of the Supervisor of Assessments Office's commitment to taxpayer education and outreach. All events are free and open to the public.

For more information about hosting a senior event in your area, please call Jennifer Scharf at (815) 740-4321 or Barb Yahnke at (815) 740-4663.

Schedule your senior event today!



Senior Specialist Jennifer Scharf helps a Lockport senior complete his exemption application.