



Rhonda R. Novak, CIAO/I  
Supervisor of Assessments



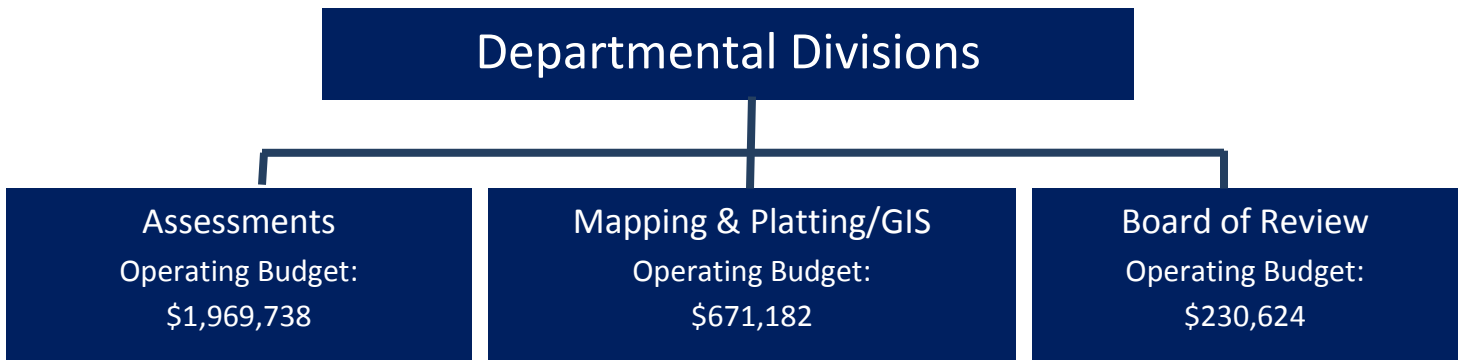
According to state law, the Supervisor of Assessments Office provides statistical assessment performance data to the Illinois Department of Revenue. In addition, it gives technical advice and provides statistical analysis of assessment data to the township assessors and the Will County Board of Review.

The Supervisor of Assessments Office also maintains records of total exempt properties and administers other special exemption, such as the Senior Homestead Exemption, the Senior Assessment Freeze, the Veterans Exemption, the Veterans/Fraternal Organization Assessment Freeze, the Open Space Preferential Assessment Type, and the Model Home Exemption.

The Supervisor of Assessments acts as an equalization authority and as such, works closely with the twenty-four township assessors, who are responsible for the initial assessed valuation calculation. The Supervisor of Assessments also serves as Clerk of the Board of Review.

Other duties of the Supervisor of Assessments Office include: issuing parcel PIN numbers, maintaining the county's base parcel map, publishing the assessment change notices and mailing notices to tax payers.

## Departmental Divisions



The Supervisor of Assessments Office employs:

- 31 full-time employees, including Board of Review members
- 2 part-time employees

In accordance with the Freedom of Information Act, public records and information may be requested by letter or e-mail. Please contact one of the following people for more information about how to obtain such information: Kathy Tezak at (815) 740-4702 ([ktezak@willcountyillinois.com](mailto:ktezak@willcountyillinois.com)), Tracy Foster at (815) 740-4664 ([tfoster@willcountyillinois.com](mailto:tfoster@willcountyillinois.com)), Jorja Simonich at (815) 740-4641 ([jsimonich@willcouthillinois.com](mailto:jsimonich@willcouthillinois.com)) or Cindy Harris at (815) 740-4650 ([charris@willcountyillinois.com](mailto:charris@willcountyillinois.com)).

General Contact Information:  
Will County Supervisor of Assessments  
302 N. Chicago Street  
Joliet, IL 60435  
(815) 740-4648  
[www.willcountysoa.com](http://www.willcountysoa.com)